

Cuore e cervello:
dalla trombolisi alle procedure interventistiche.

Analogie e differenze di due percorsi clinici e scientifici.

Mauro Gallitelli

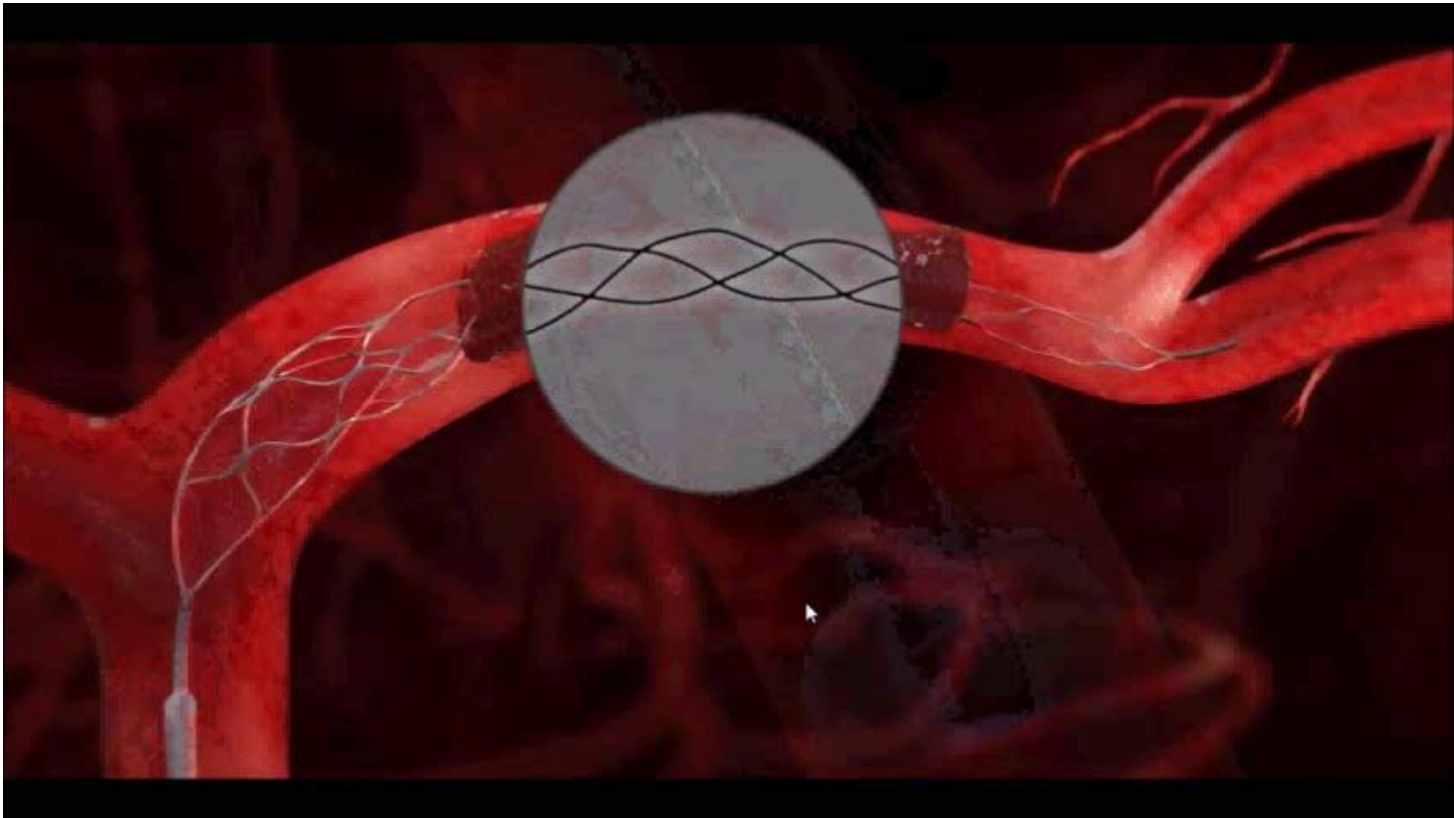
Ospedale «Santi Giovanni e Paolo» - Venezia



XI congresso nazionale

simeu

ROMA 24-26 MAGGIO 2018



Consensus

International Journal of Stroke
WSO

International Journal of Stroke
2016, Vol. 11(2) 139-147
© 2016 World Stroke Organization

Mechanical thrombectomy in acute ischemic stroke: Consensus statement by ESO-Karolinska Stroke Update 2014/2015, supported by ESO, ESMINT, ESNR and EAN

**Mechanical thrombectomy (+iv rTPA)
TREATMENT OF CHOICE**

2018 Guidelines for the Early Management of Acute Ischemic Stroke

Guidelines

European Recommendations on Organisation of Interventional Care in Acute Stroke (EROICAS)

International Journal of Stroke
2016, Vol. 11(6) 701-716
© 2016 World Stroke Organization
Reprints and permissions:
sagepub.co.uk/journalsPermissions.nav
DOI: 10.1177/1747493016647735
www.sagepub.com
SAGE



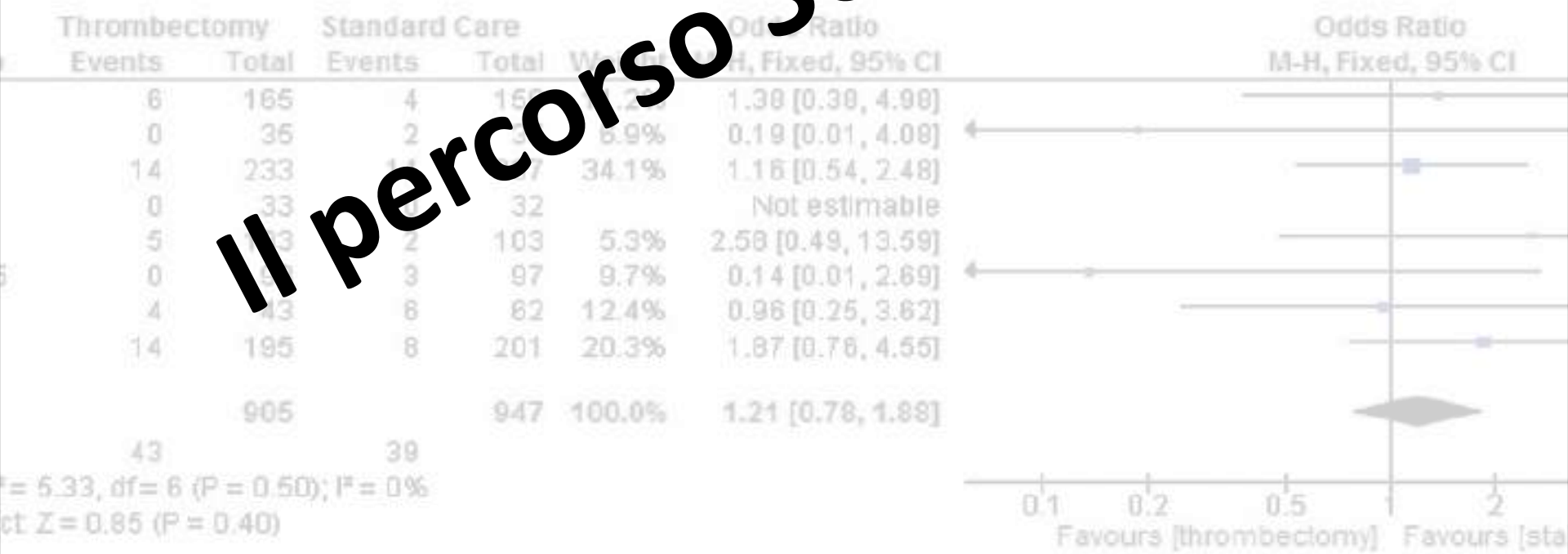
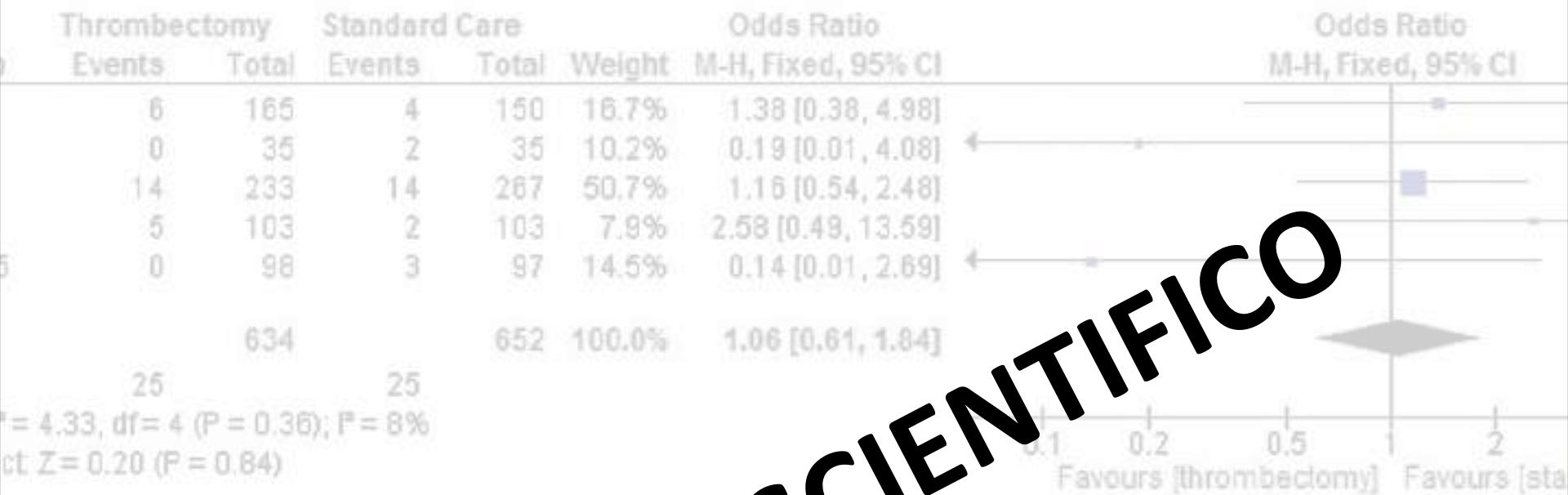
STEMI

Il percorso scientifico



Il percorso clinico



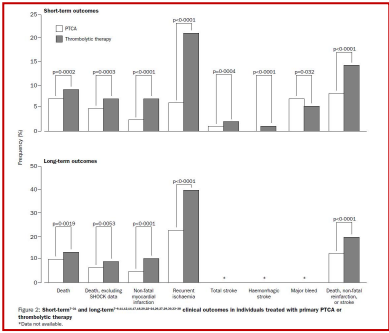
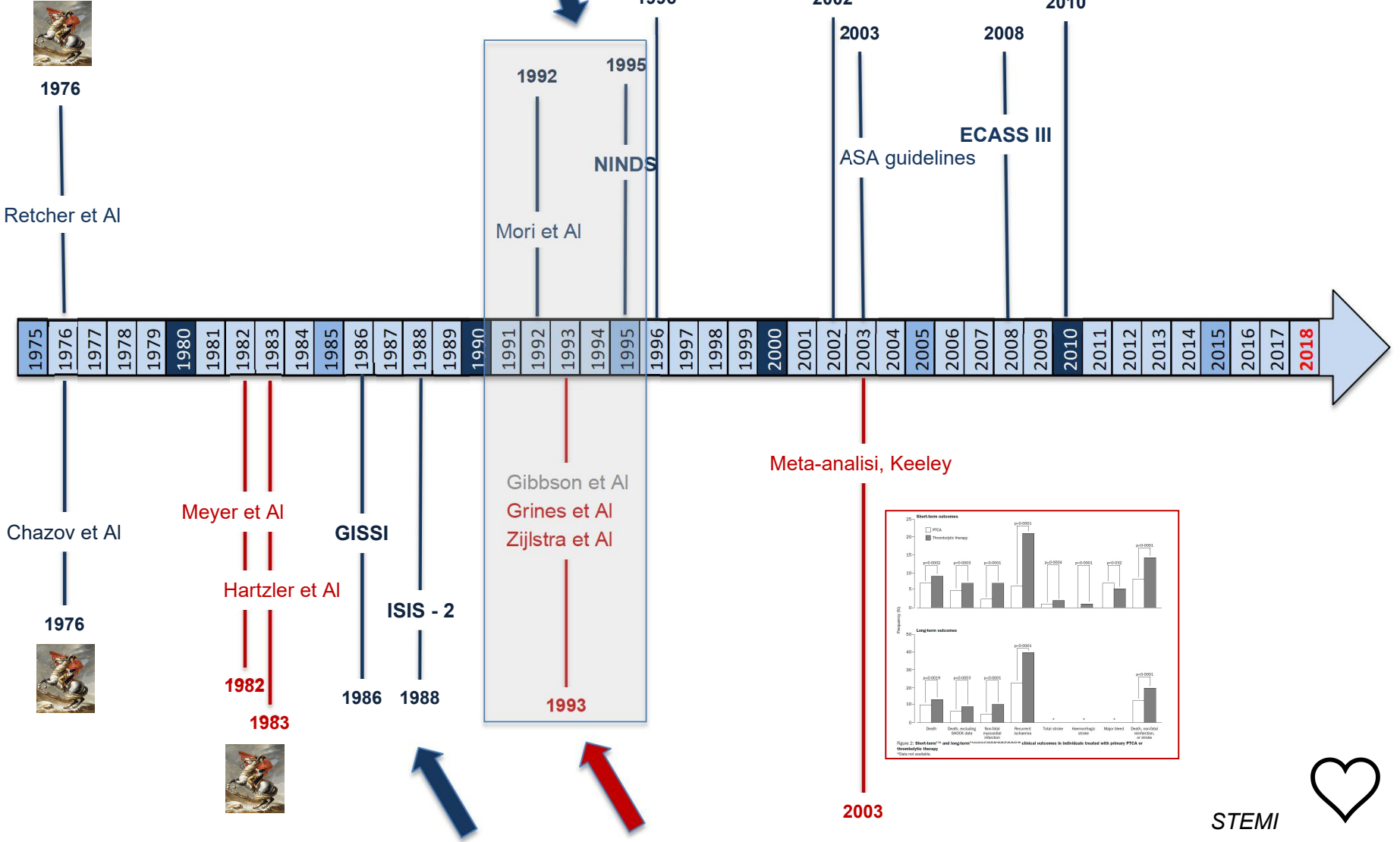


Il percorso SCIENTIFICO

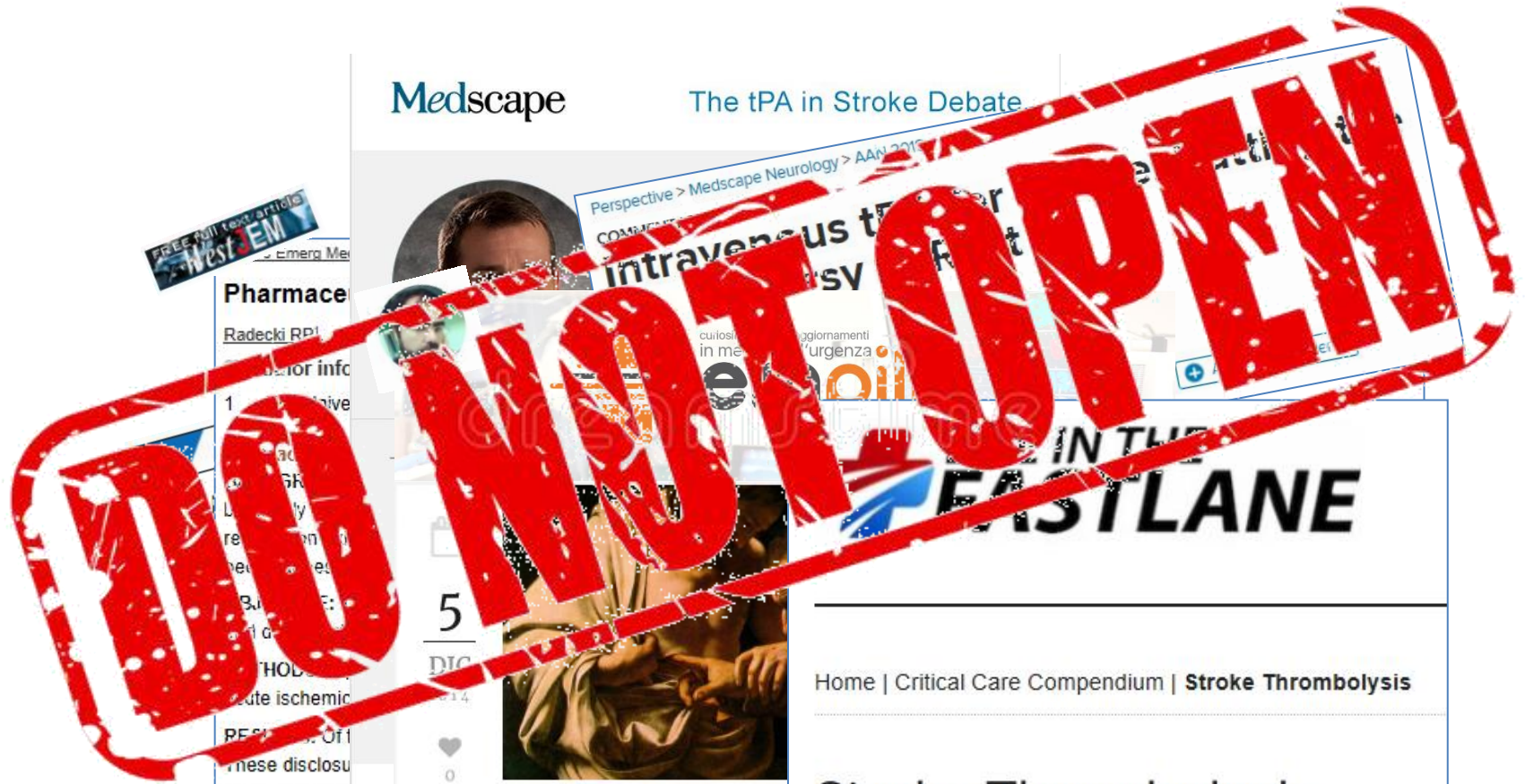


Thrombolysis

Catheter – based Interventions



Thrombolytics in Stroke **DEBATE**



Medscape

The tPA in Stroke Debate

FREE full text article
West EM

Pharmace

Radecki RPI

Senior info

1

ac

GR

Ly

re

re

3

THOD

ute ischemic

RES

ese disclosu

CONCLUSION

susceptible to

thrombolytic therapy

definitively for acute



Perspective > Medscape Neurology > AAN 2015
COMMITTEE
intravenous tPA for
ISV

curiosi
in me
aggiornamenti
'urgenza

IN THE
FAST LANE

5

DIC

0



Due pesi, due m

Embolia polmonare, embolia pol
fibrinolisi, Infarto miocardico acuto
anticoagulante, Trombolisi

/ Mattia Quarta / 8 /

Home | Critical Care Compendium | **Stroke Thrombolysis**

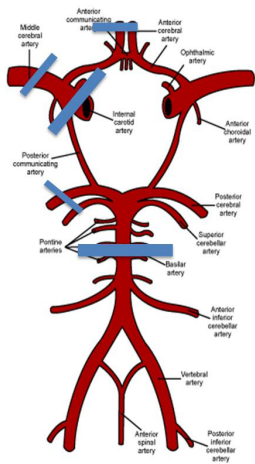
Stroke Thrombolysis

by Chris Nickson, Last updated February 22, 2017

Reviewed and revised 16 April 2014

Blog, Cardiologia, Cochrane, NNT

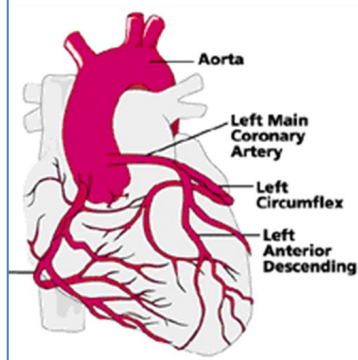
Stroke da occlusione di **grosse arterie cerebrali**



Recanalization Rate
50%

Rai A, Cline B, Williams E et Al. *J Neuroimaging*. 2015;25:238-42
Bhatia R, Hill MD, Shobha N, Menon B et Al. *Stroke*. 2009;40:3
Smith WS, Lev MH, English JD et Al. *Stroke*. 2009;40:3

STEMI



Recanalization Rate
50%

Morris D, Betriu A, Califf RM, et al. *Circulation*. 1995;91:1923-8.

La disostruzione «chimica» è inefficace

Catheter-based interventions

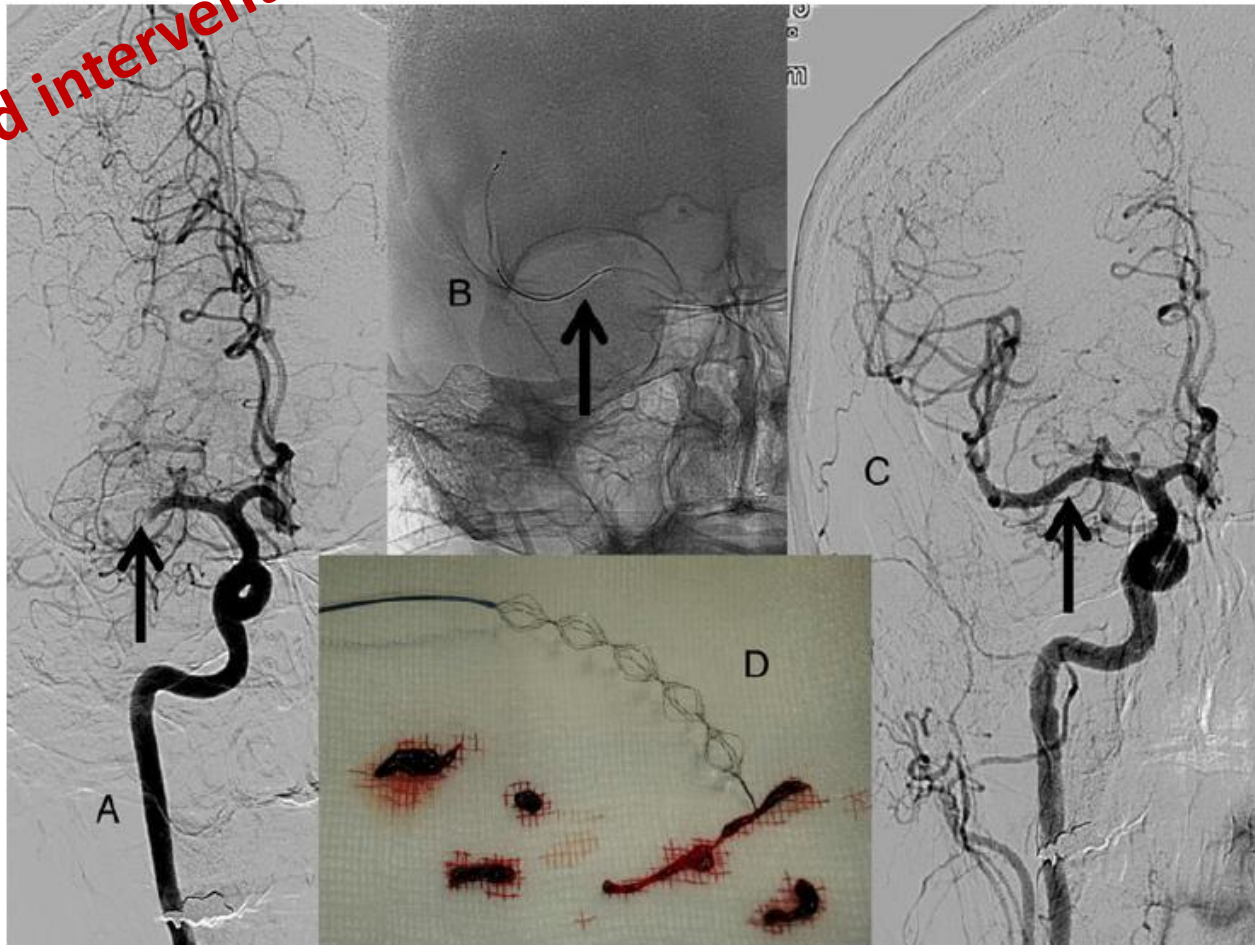


Figure 1 Catheter-based thrombectomy in acute anterior stroke. (A) Middle cerebral artery occlusion (arrow) at presentation, (B) positioning of the stent-retriever (arrow point to the occlusion site), (C) final result after thrombectomy (arrow points to the previously occluded site; note the absence of any underlying stenosis after thrombus extraction), (D) fragmented thrombus and the retriever. Patient neurological status normalized.

Interventional Management of Stroke III (IMS III)

The NEW ENGLAND
JOURNAL of MEDICINE

ESTABLISHED IN 1812

MARCH 7, 2013

VOL. 368 NO. 10

Endovascular Therapy after Intravenous t-PA versus t-PA Alone
for Stroke

N Engl J Med. 2013;368:893-903.

SYNOPSIS Expansion

ORIGINAL ARTICLE

Endovascular Therapy after Intravenous t-PA versus t-PA Alone for Ischemic Stroke

N Engl J Med. 2013;368:904-13.



FUTILITY

MR RESCUE

ORIGINAL ARTICLE

A Trial of Imaging Selection and
Endovascular Treatment for Ischemic Stroke

N Engl J Med. 2013;368:914-23.



1. Pochi pazienti trattati con stent retrievers

2. Disegno dei trials (selezione dei pazienti)

IMS III, Synthesis Expansion

No Angio-TC o Angio-RM

MR RESCUE

Arruolamento di pazienti con un grosso core infartuale

3. Tempi da inizio di trombolisi ev a trattamento endovascolare molto lunghi

IMS III

Endovascular treatment of acute ischemic stroke: the end or just the beginning?

MAXIM MOKIN, M.D., PH.D.,¹ ALEXANDER A. KHALESSI, M.D., M.S.,³ J MOCCO, M.D., M.S.,⁴ GIUSEPPE LANZINO, M.D.,⁵ TRAVIS M. DUMONT, M.D.,¹ RICARDO A. HANEL, M.D., PH.D.,⁶ DEMETRIUS K. LOPES, M.D.,⁷ RICHARD D. FESSLER II, M.D.,⁸ ANDREW J. RINGER, M.D.,⁹ BERNARD R. BENDOK, M.D.,¹⁰ EROL VEZNEDAROGLU, M.D.,¹¹ ADNAN H. SIDDIQUI, M.D., PH.D.,^{1,2} L. NELSON HOPKINS, M.D.,^{1,2} AND ELAD I. LEVY, M.D., M.B.A.^{1,2}

Departments of ¹Neurosurgery and ²Radiology, School of Medicine and Biomedical Sciences, University at Buffalo, State University of New York, Buffalo, New York; ³Division of Neurosurgery, University of California, San Diego, California; ⁴Department of Neurosurgery, Vanderbilt University, Nashville, Tennessee; ⁵Departments of Neurologic Surgery and Radiology, Mayo Clinic, Rochester, Minnesota; ⁶Department of Neurosurgery, Mayo Clinic, Jacksonville, Florida; ⁷Department of Neurosurgery, Rush University Medical Center, Chicago, Illinois; ⁸Department of Neurosurgery, St. John Providence Health System, Detroit, Michigan; ⁹Department of Neurosurgery, Mayfield Clinic, University of Cincinnati, Ohio; ¹⁰Department of Neurosurgery, Northwestern University, Chicago, Illinois; and ¹¹Department of Neurosurgery, Capital Health Institute for Neurosciences, Trenton, New Jersey

2015



MR CLEAN
The NEW ENGLAND JOURNAL of MEDICINE
JANUARY 7, 2015

A Randomized Trial of Intraarterial Thrombectomy for Ischemic Stroke

O.A. Berkner, P.S. Fransen, D. Brunner, L.A. van den Berg, H.P.J. Nederkoorn, M.J.H. Werner, M.A.A. van Walderveen, C.J. Lichstein, J. Nijboer, J. Bolters, P.A. Brouwer, B.J. Ermer, E.J. van Dijk, J. de Vries, P.L.M. de Kort, W.J.J. van Rooij, L.S.F. Dallinga, M.C. Visser, J.C.J. Boel, P.C. Vrooman, O. van der Wal, H.A. Marquering, M.E.S. Sprengers, S.F.M. Jennink, W.H. van Zuijlen, B.W.E.M. Roos, A. van der Lugt, P.J. van den Broek, for the MR CLEAN Group

BACKGROUND In patients with acute ischemic stroke caused by occlusion, intraarterial thrombectomy is highly effective. However, proof of a beneficial effect on outcome is lacking.

METHODS We randomly assigned eligible patients to care or usual care alone. Eligible patients had anterior cerebral circulation within 6 hours of onset and a modified Rankin scale score of 2 to 5. The primary outcome was functional independence (modified Rankin scale score of 1 or 2) at 90 days. Secondary outcomes included mortality, quality of life, and the number of patients who were discharged to home.

RESULTS We enrolled 500 patients in the thrombectomy group and 500 in the usual care group. At 90 days, 121 patients in the thrombectomy group and 100 in the usual care group had functional independence (24.2% vs. 20.0%; absolute difference, 4.2 percentage points; 95% CI, 0.9 to 7.5). The number of patients who were discharged to home was 100 in the thrombectomy group and 80 in the usual care group (20.0% vs. 16.0%; absolute difference, 4.0 percentage points; 95% CI, 0.9 to 7.1).

CONCLUSIONS In patients with acute ischemic stroke, intraarterial thrombectomy was more effective and safe than usual care.

TRIAL REGISTRATION ClinicalTrials.gov, NCT01100887

ESCAPE

ORIGINAL ARTICLE

Randomized Assessment of Endovascular Treatment of Ischemic Stroke

M. Goyal, A.M. Demchuk, B.K. Menon, M. Eesa, J.L. Remp, T.G. Jovin, R.A. Willinsky, B.L. Sapkota, D. Dowlatshahi, W.J. Montaner, A.Y. Poppe, K.J. Ryckborst, F.L. Silver, P.D. Williams, O.Y. Bang, B.W. Baxter, P.A. Burns, J.L. CA. Holmstedt, B. Jankowitz, M. Kelly, G. Linares, J.L. S.-I. Sohn, R.H. Swartz, P.A. Barber, S.B. Coutts, E.E. A. Weill, S. Subramaniam, A.P. Mitha, J.H. Wong, T.T. Sajobi, and M.D. Hill for the ESCAPE Trial Group

ABSTRACT

BACKGROUND

Trials of endovascular therapy for ischemic stroke have shown promising results, but the optimal timing and extent of treatment remain unclear.

We conducted this study to test whether endovascular treatment, with the use of a stent retriever and earlier intervention, improved functional outcomes and rates of mortality and morbidity.

METHODS We randomly assigned patients with acute ischemic stroke to receive intravenous alteplase per kilogram of body weight (Flow Restoration) or endovascular thrombectomy with the use of a stent retriever (Stent Retriever). The primary outcome was the modified Rankin scale score at 90 days.

RESULTS The trial was stopped early because of efficacy. The primary outcome was significantly better in the endovascular group (60% vs. 47.5%; absolute difference, 12.5 percentage points; 95% CI, 5.5 to 19.5).

CONCLUSIONS In patients with acute ischemic stroke, endovascular thrombectomy with the use of a stent retriever was more effective and safe than intravenous alteplase.

TRIAL REGISTRATION ClinicalTrials.gov, NCT01100887

EXTEND-IA

ORIGINAL ARTICLE

Endovascular Therapy for Ischemic Stroke with Perfusion-Imaging Selection

B.C.V. Campbell, P.J. Mitchell, T.J. Kleinig, H.M. Dewe, B. Yan, R.J. Dowling, M.W. Parsons, T.J. Oxley, M.A. Simpson, F. Miteff, C.R. Levi, M. Krause, T.J. Wijeratne, T.G. Phan, W. Chong, R.V. Chandra, L. de Villiers, H. Ma, P.M. Desmond, G.A. F. Oliver, C. Singer, M.D., and Reza Jahan, M.D., for the EXTEND-IA Investigators

ABSTRACT

BACKGROUND Among patients with acute ischemic stroke, the use of a stent retriever and earlier intervention may improve long-term functional outcomes.

We conducted this study to test whether endovascular treatment, with the use of a stent retriever and earlier intervention, improved functional outcomes and rates of mortality and morbidity.

METHODS We randomly assigned patients with acute ischemic stroke to receive intravenous alteplase per kilogram of body weight (Flow Restoration) or endovascular thrombectomy with the use of a stent retriever (Stent Retriever). The primary outcome was the modified Rankin scale score at 90 days.

RESULTS The trial was stopped early because of efficacy. The primary outcome was significantly better in the endovascular group (60% vs. 47.5%; absolute difference, 12.5 percentage points; 95% CI, 5.5 to 19.5).

CONCLUSIONS In patients with acute ischemic stroke, endovascular thrombectomy with the use of a stent retriever was more effective and safe than intravenous alteplase.

TRIAL REGISTRATION ClinicalTrials.gov, NCT01100887

SWIFT PRIME

ORIGINAL ARTICLE

Stent-Retriever Thrombectomy after Intravenous t-PA vs. t-PA Alone in Stroke

Jeffrey L. Saver, M.D., Mayank Goyal, M.D., Alain Borsook, Hans-Christoph Diener, M.D., Ph.D., Elad I. Levy, M.D., Vito R. Werner, Gregory W. Albers, M.D., Ph.D., Christoph Cognard, M.D., David Wernke, Werner Hacke, M.D., Ph.D., Raul G. Nogueira, M.D., Ph.D., Raul G. Nogueira, M.D., Ph.D., Blaise W. Baxter, M.D., Adnan H. Siddiqui, Dileep R. Yavagal, M.D., Oliver C. Singer, M.D., and Reza Jahan, M.D., for the SWIFT PRIME Investigators

ABSTRACT

BACKGROUND Among patients with acute ischemic stroke, the use of a stent retriever and earlier intervention may improve long-term functional outcomes.

We conducted this study to test whether endovascular treatment, with the use of a stent retriever and earlier intervention, improved functional outcomes and rates of mortality and morbidity.

METHODS We randomly assigned patients with acute ischemic stroke to receive intravenous alteplase per kilogram of body weight (Flow Restoration) or endovascular thrombectomy with the use of a stent retriever (Stent Retriever). The primary outcome was the modified Rankin scale score at 90 days.

RESULTS The trial was stopped early because of efficacy. The primary outcome was significantly better in the endovascular group (60% vs. 47.5%; absolute difference, 12.5 percentage points; 95% CI, 5.5 to 19.5).

CONCLUSIONS In patients with acute ischemic stroke, endovascular thrombectomy with the use of a stent retriever was more effective and safe than intravenous alteplase.

TRIAL REGISTRATION ClinicalTrials.gov, NCT01100887

REVASCAT

ORIGINAL ARTICLE

Thrombectomy within 8 Hours after Symptom Onset in Ischemic Stroke

T.G. Jovin, A. Chamorro, E. Cobos, M.A. de Miquel, C.A. Molina, A. Rovira, L. San Roman, J. Serena, S. Abilleira, M. Ribó, M. Millán, X. Urra, P. Cardona, E. López-Cancio, A. Tomasello, C. Castiella, J. Blasco, L. Aja, L. Dorado, H. Quesada, M. Rubiera, M. Hernández-Pérez, M. Goyal, A.M. Demchuk, W. von Kummer, M. Gállofré, and A. Dávalos, for the REVASCAT Trial Investigators

ABSTRACT

BACKGROUND We aimed to assess the safety and efficacy of thrombectomy for the treatment of acute ischemic stroke in a trial embedded within a population-based stroke reperfusion registry.

METHODS We randomly assigned patients with acute ischemic stroke to receive intravenous alteplase per kilogram of body weight (Flow Restoration) or endovascular thrombectomy with the use of a stent retriever (Stent Retriever). The primary outcome was the modified Rankin scale score at 90 days.

RESULTS The trial was stopped early because of efficacy. The primary outcome was significantly better in the endovascular group (60% vs. 47.5%; absolute difference, 12.5 percentage points; 95% CI, 5.5 to 19.5).

CONCLUSIONS In patients with acute ischemic stroke, endovascular thrombectomy with the use of a stent retriever was more effective and safe than intravenous alteplase.

TRIAL REGISTRATION ClinicalTrials.gov, NCT01100887

RESULTS Thrombectomy reduced the severity of disability over the range of the modified Rankin scale (adjusted odds ratio for improvement of functional independence [a score of 1 or 2] at 90 days, 1.05 to 2.8) and led to higher rates of functional independence (a score of 1 or 2) at 90 days (45.7% vs. 28.2%; adjusted odds ratio, 2.1; 95% CI, 1.1 to 4.0). The number of patients who were discharged to home was 100 in the thrombectomy group and 80 in the usual care group (20.0% vs. 16.0%; absolute difference, 4.0 percentage points; 95% CI, 0.9 to 7.1).

CONCLUSIONS In patients with acute ischemic stroke, endovascular thrombectomy with the use of a stent retriever was more effective and safe than intravenous alteplase.

TRIAL REGISTRATION ClinicalTrials.gov, NCT01100887



Thrombectomy works!

	Recanalization		Death at 90 days		Independence (mRS 0-2) at 90 days	
	MT	Control	MT	Control	MT	Control
MR CLEAN ¹	75%	32%	21%	22%	33%	19%
ESCAPE ²	72%	31%	10%	19%	53%	29%
EXTEND IA ³	100%	37%	9%	20%	71%	40%
SWIFT PRIME ⁴	83%	40%	9%	12%	60%	36%
REVASCAT ⁵	66%	-	18%	15%	44%	28%
TOTAL⁶	71%	-	15%	19%	46%	27%

1. Berkhemer et al. *NEJM* 2015

2. Goyal et al. *NEJM* 2015

3. Campbell et al. *NEJM* 2015

4. Saver et al. *NEJM* 2015

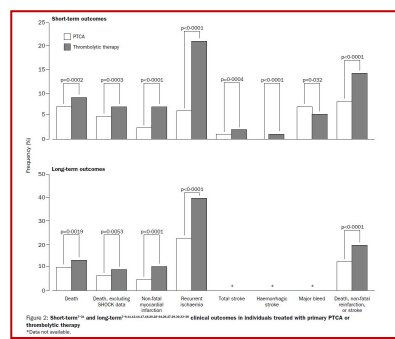
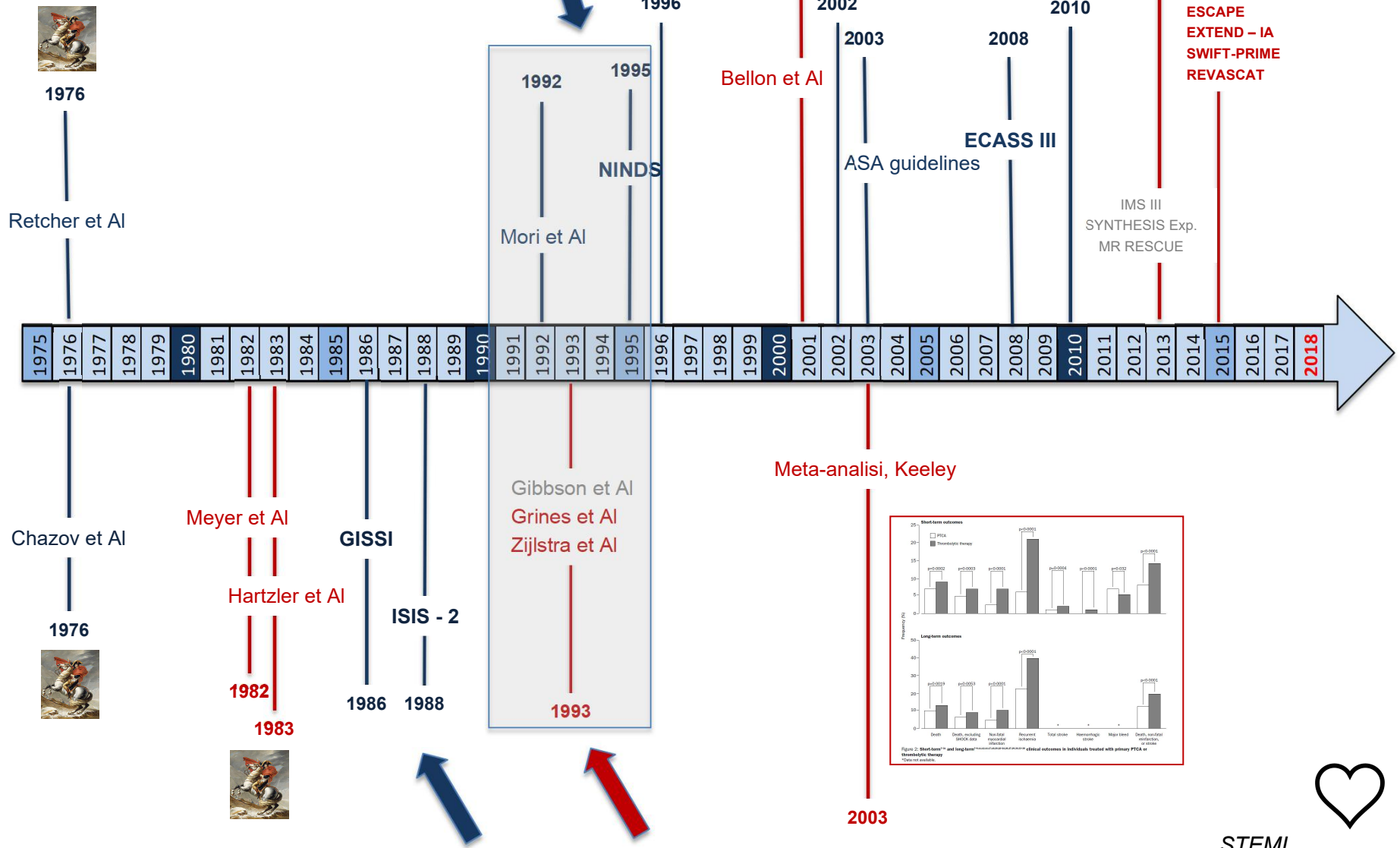
5. Jovin et al. *NEJM* 2015

6. Goyal et al. *Lancet* 2016

Thrombolysis

Catheter – based Interventions

STROKE



STEMI



only THROMBECTOMY?



...ruolo della Trombolisi...

CONS

Ineffective in the majority of LVO stroke

Increases the risks of sICH

Can delay
MT

Can soften the thrombus
and cause distal embolization (where MT not possible)

Is a contraindication for heparin and
antiplatelets (which can be useful in MT)

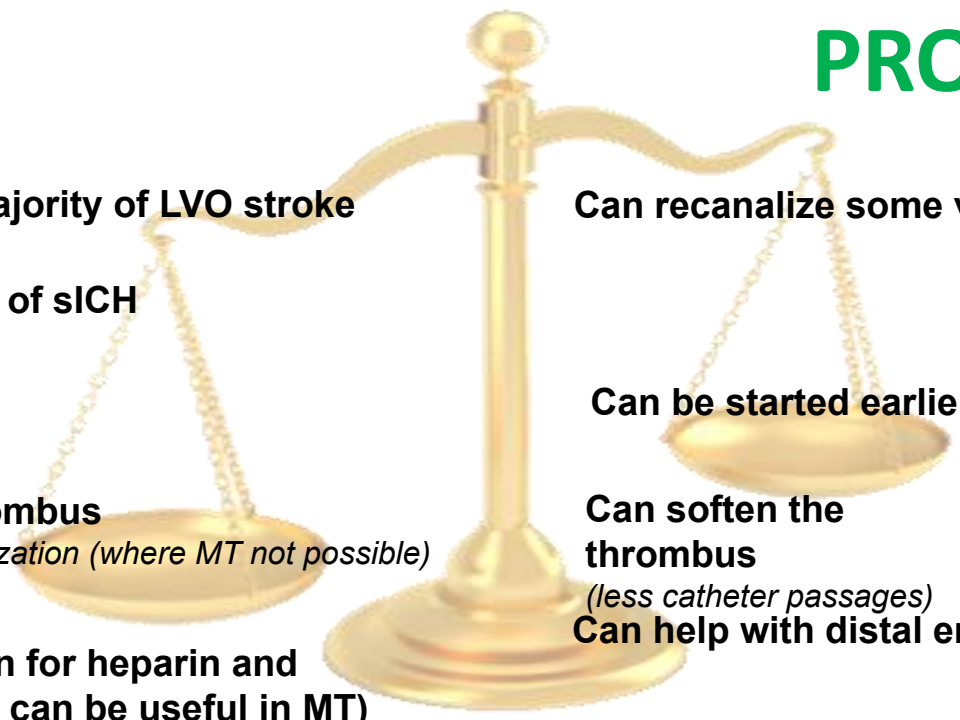
TL can increase costs w/o advantages

PROS

Can recanalize some vessels

Can be started earlier than MT

Can soften the
thrombus
(less catheter passages)
Can help with distal embolization during MT



Endovascular Thrombectomy Alone versus Combined with Intravenous Thrombolysis

Kevin Phan¹, Adam A. Dmytriw², Julian Maingard^{3,4}, Hamed Asadi³⁻⁵, Christoph J. Griessenauer², Wyatt Ng¹, Kitso Kewagamang¹, Ralph J. Mobbs¹, Justin M. Moore², Christopher S. Ogilvy², Ajith J. Thomas²

■ **BACKGROUND:** To date, no randomized trial has directly addressed the question of whether intravenous (IV) tissue plasminogen activator (tPA) improves outcomes in IV tPA-eligible patients who will eventually undergo endovascular therapy (EVT), or whether a direct EVT strategy is equally effective. We performed a systematic review and meta-analysis to compare the efficacy and safety of direct EVT versus endovascular treatment with IV tPA (EVT+IV tPA) in adults with acute ischemic stroke.

■ **METHODS:** We performed electronic searches of 6 databases from their inception to January 2017. Data were extracted and analyzed according to predefined clinical endpoints.

■ **RESULTS:** Twelve comparative studies, comprising 1275 patients in the EVT-only arm and 1340 patients in the combined EVT+IV tPA arm, were included. The rates of good functional outcomes (modified Rankin Scale score ≤ 2) and 90-day mortality were not statistically significantly different between the EVT and EVT+IV tPA arms (44% vs. 48%; odds ratio [OR], 0.80; 95% confidence interval [CI], 0.64–1.002; $P = 0.052$ and 20.4% vs. 19.4%, OR 1.19; 95% CI, 0.83–1.71; $P = 0.34$, respectively). The rate of symptomatic intracranial hemorrhage also was not significantly different between the EVT and EVT+IV tPA arms (3.7% vs. 3.8%; OR, 0.98; 95% CI, 0.65–1.48; $P = 0.91$). There were no

between-group differences in the rates of other complications.

■ **CONCLUSIONS:** No significant differences between the 2 groups were found in terms of favorable functional outcome, mortality rate, or complications based on contemporary endovascular therapies.

INTRODUCTION

Numerous studies have demonstrated the benefits of intravenous (IV) tissue plasminogen activator (tPA) for treating acute ischemic stroke, regardless of stroke subtype.¹ The aim of IV tPA therapy is to recanalize the affected blood vessel and establish reperfusion.² However, in large vessel occlusions, the efficacy of reperfusion using IV tPA alone has been suboptimal, with recanalization rates as low as 6% for occlusion of the terminal internal carotid artery.³⁻⁴

Recently, the publication of multiple randomized controlled trials⁵⁻⁸ convincingly demonstrated that the addition of endovascular thrombectomy (EVT) to IV tPA improved outcomes after acute ischemic stroke caused by large vessel occlusions. The design of these trials was such that the majority of patients who were treated with mechanical thrombectomy also received IV thrombolysis. However, the number of patients in these trials who did not receive previous IV tPA was very small, and thus whether

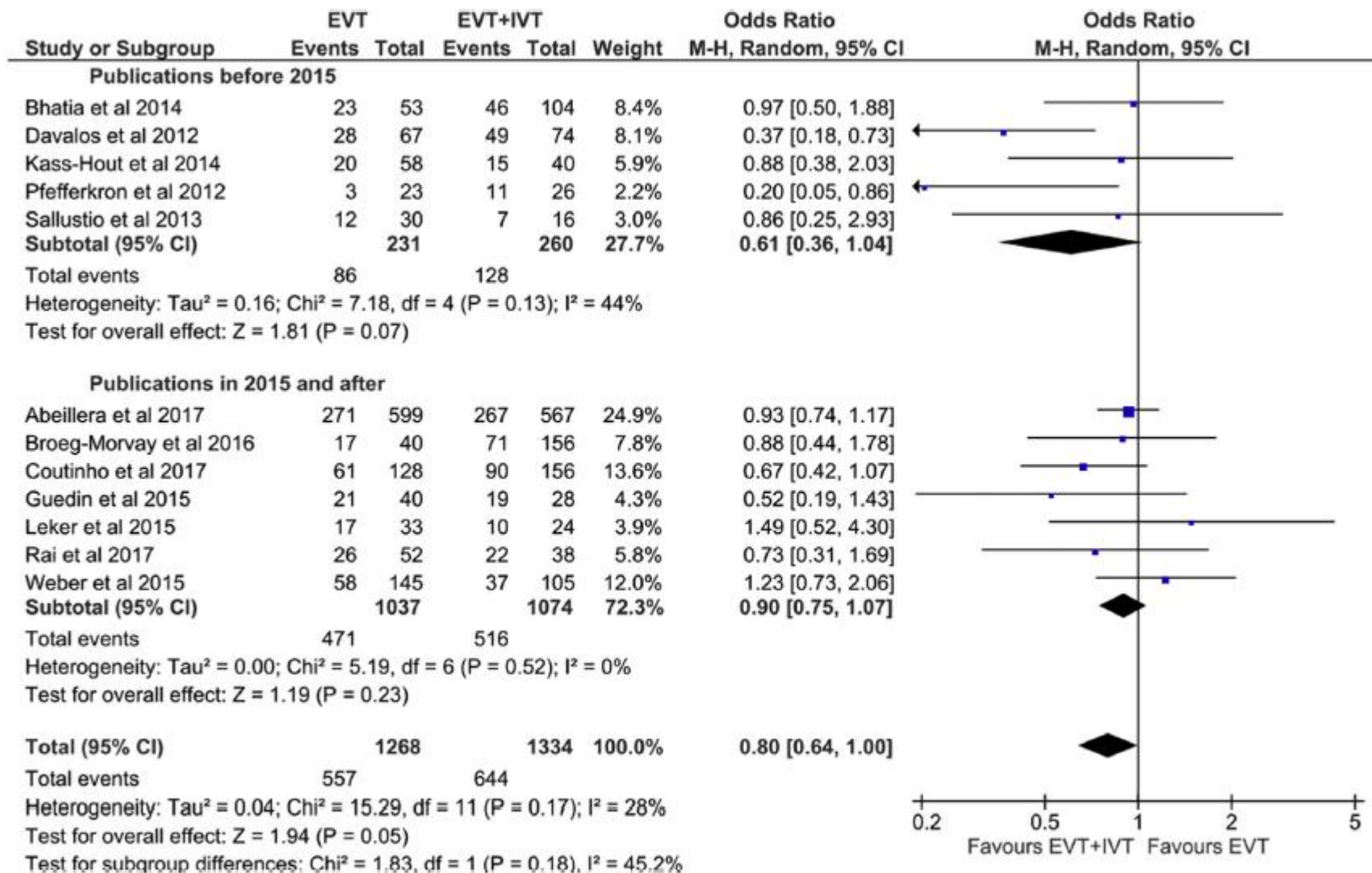


Figure 2. Forest plot of the odds ratio (OR) of 90-day favorable functional outcome (modified Rankin Scale score ≤ 2) for endovascular therapy (EVT) versus endovascular therapy and intravenous tissue plasminogen activator

(EVT+IV tPA). Results are grouped according to publication date before 2015 or 2015 and after.

Interhospital Transfer Prior to Thrombectomy is Associated with Delayed Treatment and Worse Outcome in the STRATIS Registry.

Froehler MT¹, Saver JL², Zaidat OO³, Jahan R², Aziz-Sultan MA⁴, Klucznick RP⁵, Haussen DC⁶, Hellinger FR Jr⁷, Yavagal DR⁸, Yao TL⁹, Liebeskind DS², Jadhav AP¹⁰, Gupta R¹¹, Hassan AE¹², Martin CO¹³, Bozorgchami H¹⁴, Kaushal R¹⁵, Nogueira RG⁶, Gandhi RH⁷, Peterson EC⁸, Dashti SR⁹, Given CA 2nd¹⁶, Mehta BP¹⁷, Deshmukh V¹⁸, Starkman S², Linfante J¹⁹, McPherson SH²⁰, Kyam P²¹, Grobelny TJ²², Hussain MS²³, Thacker J²⁴, Vora N²⁵, Chen PR²⁶, Monteith SJ²⁷, Ecker RD²⁸, Schirmer CM²⁹, Sauvageau E³⁰, Abou-Chebl A³¹, Derdeyn CP³², Maida L³³, Badruddin A³⁴, Siddiqui AH³⁵, Dumont TM³⁶, Alhajeri A³⁷, Taqi MA³⁸, Asi K³⁹, Carpenter JS⁴⁰, Boulos A⁴¹, Jindal G⁴², Puri AS⁴³, Chitale R⁴⁴, Deshaies EM⁴⁵, Robinson DH⁴⁶, Kallmes DF⁴⁷, Baxter BW⁴⁸, Jumaa MA⁴⁹, Sunenshine P⁵⁰, Majidoo AQ⁵¹, English JD⁵², Suzuki S⁵³, Fessler RD⁵⁴, Delgado Almandoz JE⁵⁵, Martin JC⁵⁶, Mueller-Kronast NH¹⁵; STRATIS Investigators.

Author information

Abstract

Background -Endovascular treatment with mechanical thrombectomy (MT) is beneficial for acute stroke patients suffering a large vessel occlusion, though treatment efficacy is highly time-dependent. We hypothesized that interhospital transfer to endovascular-capable centers would result in treatment delays and worse clinical outcomes compared to direct presentation. **Methods** -STRATIS was a prospective, multicenter, observational, single-arm study of real-world MT for acute stroke due to anterior-circulation large vessel occlusion performed at 55 sites over 2 years, including 1000 patients with severe stroke and treated within 8 hours. Patients underwent MT with or without IV-tPA, and were admitted to endovascular-capable centers via either interhospital transfer or direct presentation. The primary clinical outcome was functional independence (modified Rankin Score 0-2) at 90 days. We assessed 1) real-world time metrics of stroke care delivery, 2) outcome differences between direct and transfer patients undergoing MT, and 3) the potential impact of local hospital bypass. **Results** -A total of 984 patients were analyzed. Median onset-to-revascularization time was 202.0 minutes for direct vs. 311.5 minutes for transfer patients ($p < 0.001$). Clinical outcomes were better in the direct group with 60.0% (299/498) achieving functional independence, compared to 52.2% (213/408) in the transfer group (odds ratio 1.38, 95%CI 1.06-1.79; $p = 0.02$). Likewise, excellent outcome (modified Rankin Score 0-1) was achieved in 47.4% (236/498) of direct patients vs. 38.0% (155/408) of transfer patients (odds ratio 1.47, 95%CI 1.13-1.92; $p = 0.005$). Mortality did not differ between the two groups (15.1% for direct, 13.7% for transfer; $p = 0.55$). IV-tPA did not impact outcomes. Hypothetical bypass modeling for all transferred patients suggested that IV-tPA would be delayed by 12 minutes but MT would be performed 91 minutes sooner if patients were routed directly to endovascular-capable centers. If bypass is limited to a 20-mile radius from onset, then IV-tPA would be delayed by 7 minutes and MT performed 94 minutes earlier. **Conclusions** -In this large, real-world study, interhospital transfer was associated with significant treatment delays and lower chance of good outcome. Strategies to facilitate more rapid identification of large vessel occlusion and direct routing to endovascular-capable centers for severe stroke patients may improve outcomes. **Clinical Trial Registration** -URL: <http://www.clinicaltrials.gov>. Unique identifier: [NCT02239840](https://doi.org/10.1186/11774).

Recommendations from the ESO-Karolinska Stroke Update Conference, Stockholm 13–15 November 2016

Niaz Ahmed^{1,2}, Thorsten Steiner^{3,4}, Valeria Caso⁵ and
Nils Wahlgren²; for the ESO-KSU session participants*

Session 10: Prehospital triage for mechanical thrombectomy

B. Mechanical thrombectomy: ‘Drip and ship’ or ‘load and go’?

3. For patients with a suspected LAO based on current clinical tools on field, there is uncertainty about the equipoise between drip and ship (that prioritizes early IVT and other standard of care therapies) and mother-ship (that prioritizes early endovascular thrombectomy) models. Data based on randomized controlled trials are needed to determine the most beneficial model for each particular patient (eligible or not for iv-tPA) in different geographical regions and to establish isochrones where a particular model may be beneficial (Grade C).
4. In the absence of evidence, for patients considered eligible to IVT in the field, if estimated transfer time to the nearest primary stroke centre is considerably shorter than time to a comprehensive stroke centre (approximately more than 30–45 min), the drip and ship model should be considered (Grade C).
5. In the absence of evidence, in a scenario where a primary stroke centre and comprehensive stroke centre are equidistant (approximately not more than 30–45 min apart) or when contraindications to IVT are known in the field, patients with suspected LAO in the field, should be considered for transfer directly to a comprehensive stroke centre, bypassing any closer primary stroke centres (Grade C).
6. In case of primary admission to a primary stroke centre, evaluation and treatment for patients with a possible LAO must be expeditious, to ensure a rapid secondary transfer to a comprehensive stroke centre, avoiding any sources of delay such as complex neuroimaging studies (i.e. perfusion studies) or waiting for effect of IVT. First picture to puncture time should be less than 90 min (Grade A).

Comparison of outcome and interventional complication rate in patients with acute stroke treated with mechanical thrombectomy with and without bridging thrombolysis.

Weber R¹, Nordmeyer H², Hadisurya J¹, Heddl M², Stauder M², Stracke P², Berger K³, Chapot R².

Author information

- 1 Department of Neurology, Alfred Krupp Krankenhaus Essen, Essen, Germany.
- 2 Department of Radiology and Neuroradiology, Alfred Krupp Krankenhaus Essen, Essen, Germany.
- 3 Institute of Epidemiology and Social Medicine, University of Münster, Münster, Germany.

Abstract

BACKGROUND: No randomized trial has investigated the effect of mechanical thrombectomy (MT) alone in patients with acute stroke. There are conflicting results as to whether prior intravenous thrombolysis (IVT) facilitates subsequent MT, and data in patients treated with MT alone owing to contraindications to IVT are limited.

OBJECTIVE: To compare consecutive patients treated with MT alone or with preceding IVT in a large tertiary neurointerventional center, with special emphasis on contraindications to IVT.

METHODS: Retrospective analysis of 283 consecutive patients with acute ischemic stroke treated with MT in a tertiary neurovascular center over 14 months. Data on characteristics of periprocedural times, recanalization rate, complications, and long-term functional outcome were collected prospectively.

RESULTS: Information on prior IVT and functional outcome was available in 250 patients. Mean (SD) follow-up period was 5.7 (5.1) months and 105 (42%) patients received both IVT and MT. No significant differences were found in successful recanalization rates (Thrombolysis in Cerebral Infarction (TICI) 2b/3, 73.8% vs 73.1, $p=0.952$), complication rates, and long-term favorable outcome (modified Rankin Scale 0-2, 35.2% vs 40%, $p=0.444$) between patients receiving MT plus IVT and those receiving MT alone. A favorable outcome in patients directly treated with MT alone who were eligible for IVT was achieved in 48.2%. Thrombectomy was safe and resulted in a favorable outcome in 32% of patients with absolute contraindications to IVT.

CONCLUSIONS: Preceding use of IVT was not an independent predictor of favorable outcome in patients with acute stroke treated with MT and complication rates did not differ whether or not IVT was used. MT is safe and achieved a favorable outcome in one-third of patients with stroke ineligible for IVT.

Direct Mechanical Intervention Versus Combined Intravenous and Mechanical Intervention in Large Artery Anterior Circulation Stroke A Matched-Pairs Analysis

Anne Broeg-Morvay, MD*; Pasquale Mordasini, MD, MSc*; Corrado Bernasconi, MD, PhD;
Monika Bühlmann, MD; Frauke Pult, MD; Marcel Arnold, MD; Gerhard Schroth, MD;
Simon Jung, MD; Heinrich P. Mattle, MD; Jan Gralla, MD, MSc*; Urs Fischer, MD, MSc*

Background and Purpose—Five randomized controlled trials have consistently shown that mechanical thrombectomy (MT) in addition to best medical treatment (\pm intravenous tissue-type plasminogen activator) improves outcome after acute ischemic stroke in patients with large artery anterior circulation stroke. Whether direct MT is equally effective as combined intravenous thrombolysis with MT (ie, bridging thrombolysis) remains unclear.

Methods—We retrospectively compared clinical and radiological outcomes in 167 bridging patients with 255 patients receiving direct MT because of large artery anterior circulation stroke. We matched all patients from the direct MT group who would have qualified for intravenous tissue-type plasminogen activator with controls from the bridging group, using multivariate and propensity score analyses. Functional independence was defined as modified Rankin Scale score of 0 to 2.

Results—From February 2009 to August 2014, 40 patients from the direct MT group would have qualified for bridging thrombolysis but were treated with MT only. Clinical and radiological characteristics did not differ from the bridging cohort, except for higher rates of hypercholesterolemia ($P=0.019$), coronary heart disease ($P=0.039$), and shorter intervals from symptom onset to endovascular intervention ($P=0.01$) in the direct MT group. Functional independence, mortality, and intracerebral hemorrhage rates did not differ ($P>0.1$). After multivariate matching analysis outcome in both groups did not differ, except for lower rates of asymptomatic intracerebral hemorrhage ($P=0.023$) and lower mortality ($P=0.007$) in the direct MT group.

Conclusions—In patients with large anterior circulation stroke, direct mechanical intervention seems to be equally effective as bridging thrombolysis. A randomized trial comparing direct MT with bridging therapy is warranted. (*Stroke*. 2016;47:1037-1044. DOI: 10.1161/STROKEAHA.115.011134.)

[Home](#) » The SWIFT DIRECT trial

The SWIFT DIRECT trial

Solitaire™ With the Intention For Thrombectomy Plus Intravenous t-PA Versus DIRECT Solitaire™ Stent-retriever Thrombectomy in Acute Anterior Circulation Stroke (SWIFT DIRECT).

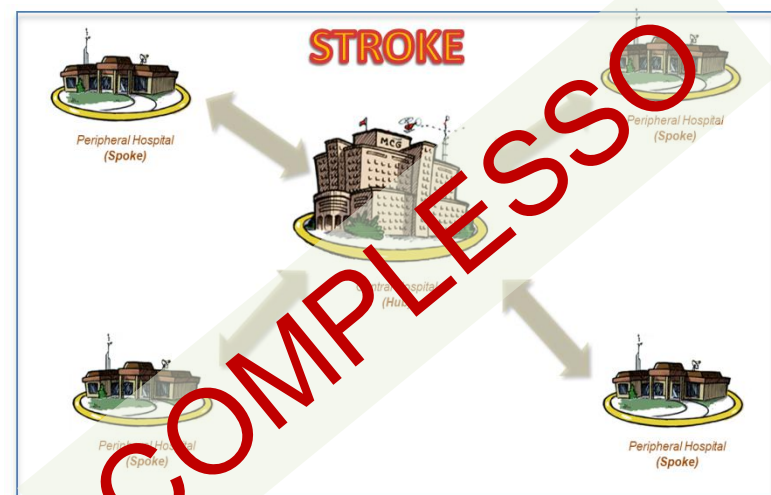
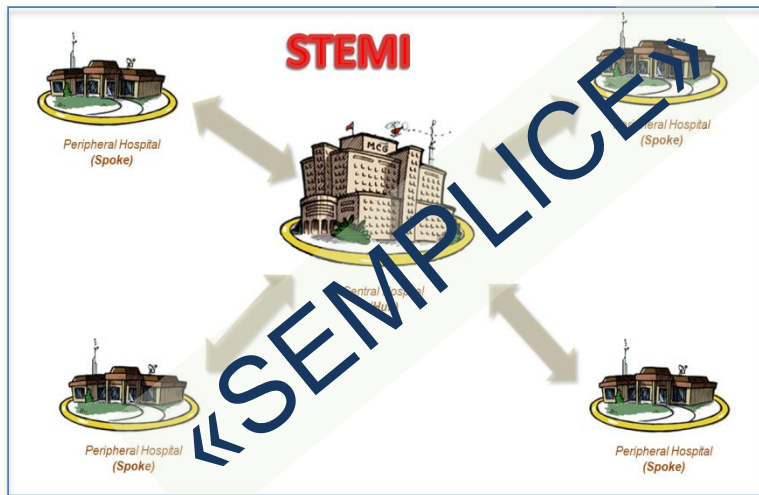
Bridging Thrombolysis Versus Direct Mechanical Thrombectomy in Acute Ischemic Stroke.

Please find more information on www.clinicaltrials.gov

<https://www.swift-direct.ch/the-swift-direct-trial/>



Il percorso CLINICO



Diagnosi più complessa (*Tecnologia necessaria, Capacità di Interpretazione*)

Finestra terapeutica più ristretta

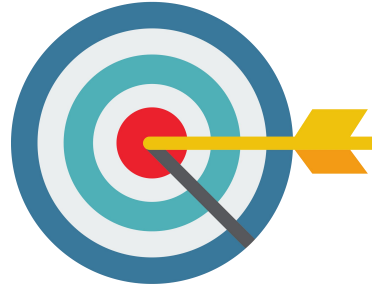
Anatomia del circolo cerebrale (*Vasi piccoli, tortuosi, variabilità anatomica*)

Danno da riperfusione (*emorragia cerebrale*)

Assente evidenza di farmaci utili nel peri-procedurale

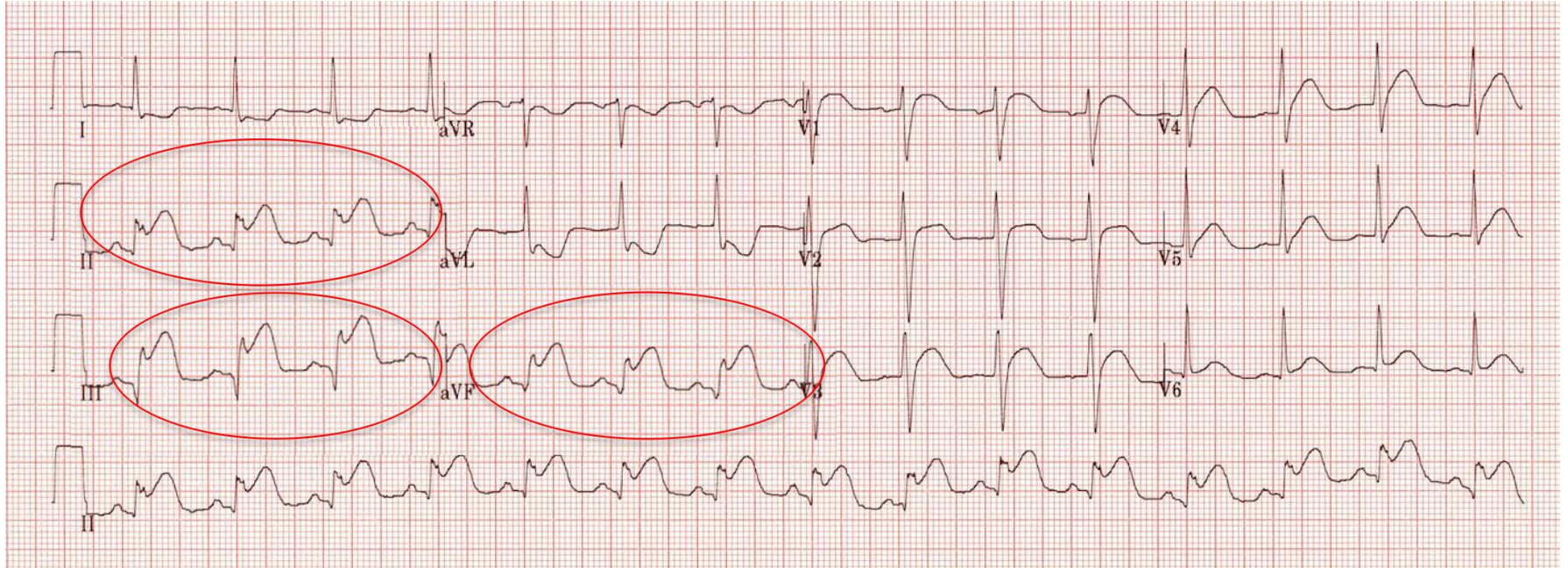
Approccio multidisciplinare

Basso numero di pazienti trattati (*curve di apprendimento*)



Identificazione del paziente

...semplice



...difficile

In ospedale



Angio-TC Cerebrale



...difficoltosa

Sul territorio



CENTRALIZZAZIONE DEL PAZIENTE

Prehospital stroke scales and large vessel occlusion: A systematic review.

Vidale S¹, Agostoni E^{1,2}.

Author information

- 1 Department of Neurology & Stroke Unit, Sant'Anna Hospital, Como, Italy.
- 2 Department of Neurology & Stroke Unit, Niguarda Ca' Granda Hospital, Milan, Italy.

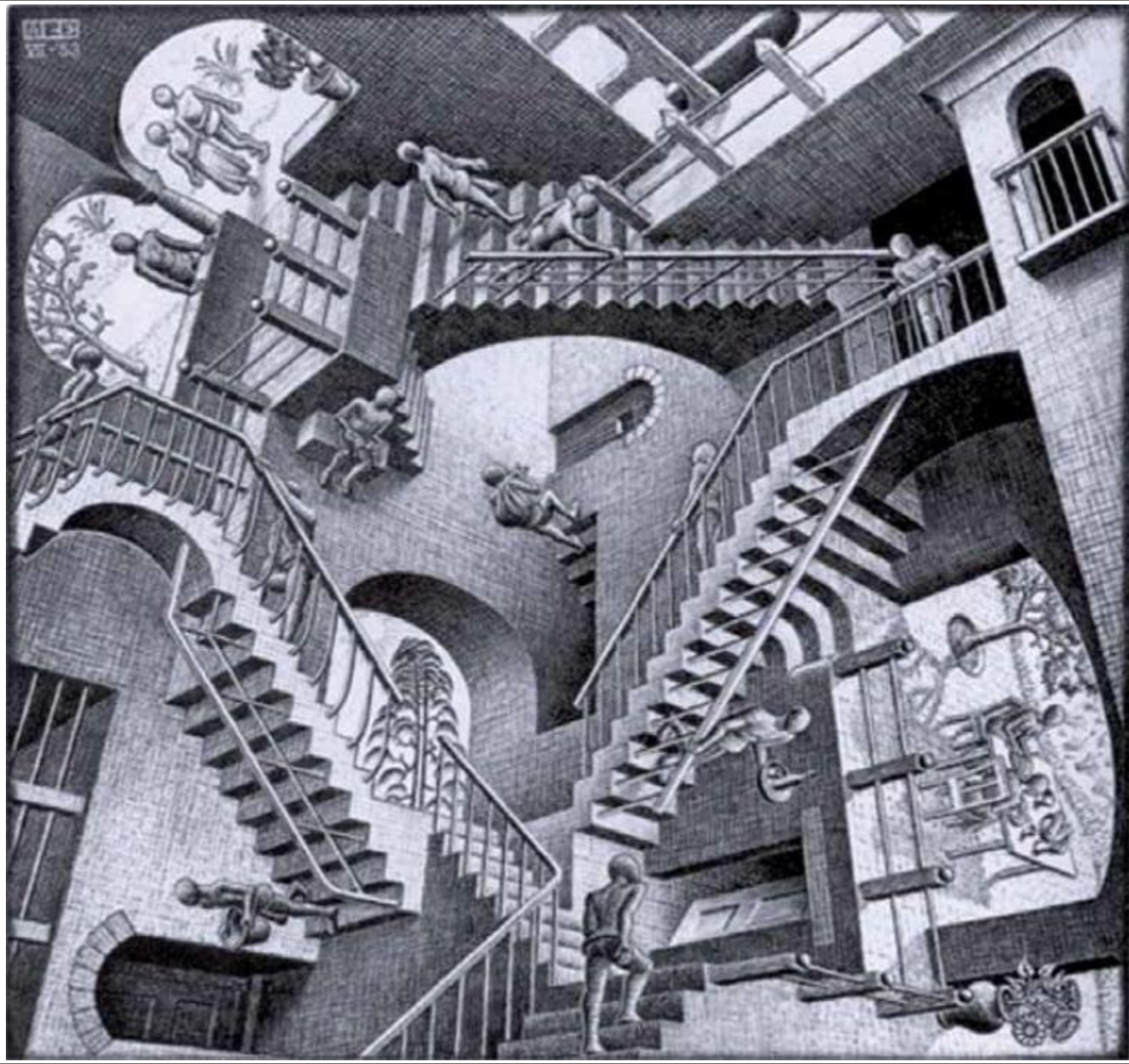
Abstract

BACKGROUND AND PURPOSE: Time sensitivity for pharmacological and mechanical arterial recanalization in acute ischemic stroke influences the choice of the reference hospital. The accurate selection and identification of patients with high probability of a large vessel occlusion (LVO) in the prehospital setting improve the rationalization of the transport in the more suitable centers. Aim of this analysis was to determine the diagnostic accuracy of prehospital stroke scales detecting LVO.

MATERIAL AND METHODS: Studies were searched into MEDLINE, EMBASE, and CINHAI databases between January 1990 and September 2017. Principal measurements of the meta-analysis were the overall accuracy level, sensitivity, and specificity of prehospital stroke scales.

RESULTS: Nineteen scoring systems were included in the analysis coming from 13 studies. A total of 9824 patients were considered. Although a higher heterogeneity was observed in the analysis, three scores showed better results in predicting a LVO (the stroke Vision, Aphasia, Neglect assessment, the National Institute of Health Stroke scale and the Los Angeles Motor Scale). We observed significant differences of overall accuracy only for scores including hemineglect as cortical neurological sign ($P < .05$).

CONCLUSIONS: This meta-analysis suggests that some prehospital scoring systems including cortical signs showed better accuracy to predict stroke due to LVO. However, the assessment of these signs could be difficult to investigate by paramedics and personnel of Emergency Medical Services, and for this reason, further prospective evaluations are needed.

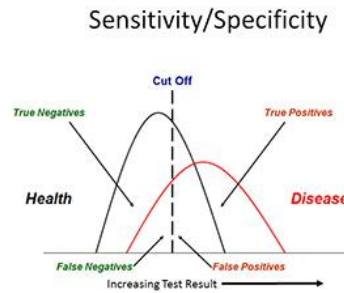




Semplicità di utilizzo



Accuratezza diagnostica





Recommendations from the ESO-Karolinska Stroke Update Conference, Stockholm 13–15 November 2016

Session 10: Prehospital triage for mechanical thrombectomy

Chair: U. Fischer (Bern), Secretary: M. Mazya (Stockholm), Speakers: D. Damgaard (Aarhus), A. Davalos (Barcelona), M. Mazya (Stockholm)

A. Clinical identification of stroke patients with large vessel occlusion: Current evidence and limitations

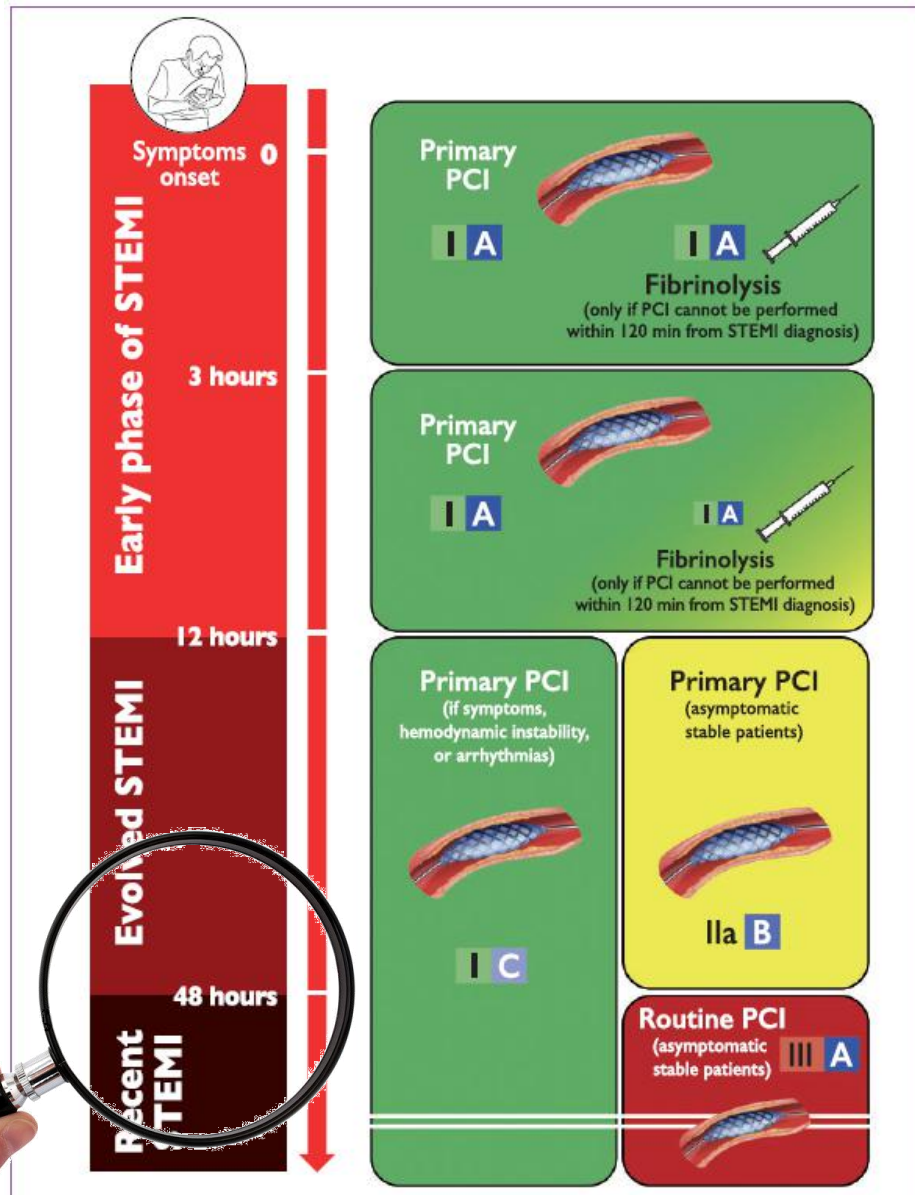
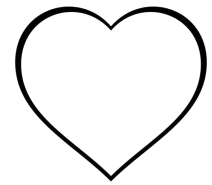
1. Several published clinical scores to predict large artery occlusion (LAO) appear to have similar predictive performance in the range of 70–80%, resulting in 20–30% of patients with LAO being missed at optimal score cut-off levels. At the same cut-off levels, 12–25% of triage positive patients would not have a LAO (Grade C).
2. Studies validating the predictive performance of currently available LAO prediction scores should be performed in pre-hospital settings in unselected patients with a suspicion of stroke following initial contact with emergency medical services (Grade C).

Mobile Stroke Units...



Finestra terapeutica

...ampia



...stretta



NINDS

3 hours

ECASS III

4.5 hours

MR CLEAN
ESCAPE
EXTEND – IA
SWIFT-PRIME
REVASCAT

6 hours



Novembre 2017

The NEW ENGLAND JOURNAL of MEDICINE

ORIGINAL ARTICLE

Thrombectomy 6 to 24 Hours after Stroke
with a Mismatch between Deficit and Infarct

The NEW ENGLAND JOURNAL of MEDICINE

ORIGINAL ARTICLE

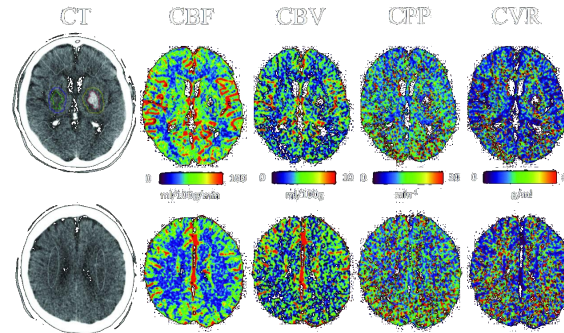


Gennaio 2018

Thrombectomy for Stroke at 6 to 16 Hours
with Selection by Perfusion Imaging




Imaging avanzato (TC di perfusione o DW-MRI)



«Last time seen well»

Interquartile range	2.0–18.0	3.0–18.1
Type of stroke onset — no. (%)‡		
On awakening	67 (63)	47 (47)
Unwitnessed stroke	29 (27)	38 (38)
Witnessed stroke	11 (10)	14 (14)
Occlusion site — no. (%)§		

(Dawn trial, 2017)



Solo il **5%** dei pazienti con
stroke riceve un trattamento
riperfusivo

Hirsch JA, Yoo AJ, Noguiera RG et Al. Case volumes of intra-arterial and intravenous treatment of ischemic stroke in the USA. J Neurointerv Surg 2009;1:27–31.



Entrambi tempo - dipendenti ma
fattore tempo è critico per lo **STROKE**

A close-up photograph of two individuals in white lab coats shaking hands. A stethoscope is visible around the neck of the person on the left. The background is a soft, out-of-focus clinical setting.

**Cardiologi interventisti
&
Stroke**



The role of **cardiologists** in stroke prevention and treatment: position paper of the European Society of Cardiology Council on Stroke

**Petr Widimsky^{1*}, Wolfram Doehner^{2,3}, Hans Christoph Diener⁴,
Isabelle C. Van Gelder⁵, Alison Halliday⁶, and Mikael Mazighi⁷ on behalf of the ESC
Council on Stroke**

Endovascular treatment and catheter-based thrombectomy

The recent advances in interventional treatment of acute stroke^{32–36} established catheter-based thrombectomy (on top of best medical therapy) as class IA indication for the treatment of anterior circulation stroke (*Figure 3*) caused by emergent large vessel occlusion presenting within <6 h from symptom onset.^{37,38} The DAWN trial (presented during ESOE 2017, publication pending) showed that with the use of sophisticated magnetic resonance imaging, the therapeutic time window can be extended to 24 h. Currently, over 10% of stroke patients are eligible for endovascular treatment but future

research and clinical experience will have to prove the full potential of this treatment.

A number of questions emerged from the recent trials that will be addressed in future studies: those include questions on logistics and timing as well as procedural issues, patient selection, concomitant treatments and others. One multisociety consensus document proposed general standards for hospital requirements and physician qualifications for performing endovascular stroke interventions.³⁹ The authors recognize that the implementation of such standards need to account for a wide variety of national clinical standards and procedural requirements. Further evaluation and interdisciplinary communication are needed to define on the basis of national and local requirements how physicians with related experience such as interventional cardiologists with carotid stenting (CAS) experience may be adequately trained for endovascular thrombectomy. Ongoing and future trials and interdisciplinary communication may answer these unresolved questions.⁴⁰

PROS

CONS

Manualità consolidata *(PCI)*

**Esperienza con stenting
della carotide**

Grossi volumi di attività
(Correlazione volumi – outcomes)

Network ben stabilito
(Hub & Spoke dello STEMI)

Anatomia più difficile

*(Vasi più piccoli, più tortuosi, con maggiore
variabilità anatomica)*

Tecniche differenti

**Neuro-radiologi
interventisti formati con
esperienza da più patologie**
*(Stroke ischemico, Aneurismi, Malformazioni
vascolari)*

TRAINING

Aspetti diagnostici

(Esame neurologico, Interpretazione TC, Angio-TC e TC di perfusione)

Aspetti procedurali

TO BE
CONTINUED...



Trombectomia Meccanica UNICO trattamento???



I cardiologi interventisti... e la nicchia vuota???

